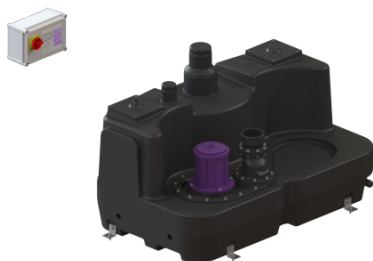


Lifting stati. Aqualift F XL 300l Mono, SPF 1500-S3



Article information

Item no.: 11027
GTIN: 4026092056943
Price group: 50

Advantages

- Different performance classes available
- Pressure sensor for reliable pneumatic level measurement
- Maximum operating reliability due to intelligent control unit (Duo)

Description

The lifting station for faecal and faecal-free wastewater is equipped with a submersible pump and a backflow preventer. The collection tank made of permanently resistant polymer (PE) offers universal connection options and has a screwed access cover.

The station is controlled by a user-friendly control unit, which can be optionally integrated in the building management system via a potential-free contact or alarm and collective fault messages can be output via a GSM interface (Comfort control unit).

| | |
|-------------------------|------------------------|
| Type of wastewater: | wastewater with sewage |
| Installation situation: | free-standing set-up |

Version:

| | |
|-----------------|----------------|
| Type of system: | Single station |
|-----------------|----------------|

General characteristics:

| | |
|-----------|------------|
| Colour: | black |
| Standard: | EN 12050-1 |

Tank:

| | |
|---------------------------|----------|
| Tank volume: | 300 l |
| Pressure pipe connection: | vertical |

Pumping device:

| | |
|---------------------------------|---------------------|
| Pump: | SPF 1500 |
| Number of pumps: | 1 |
| Operating mode: | S3 - 50 % |
| Impeller type: | Multi-vane impeller |
| Length of mains cable for pump: | 5 m |

Control:

| | |
|-------------------------------|----------------|
| Control unit: | Comfort |
| Operating voltage: | 400 V |
| Mains frequency: | 50 Hz |
| Type of level measurement: | pneumatic |
| Level measurement instrument: | Immersion pipe |