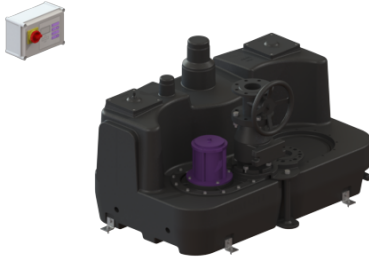


## Lifting stati. Aqualift F XL 300l Mono, SPF 3000-S3, Cast-iron gate valve



### Article information

Item no.: 11051  
GTIN: 4026092057186  
Price group: 50

### Advantages

- Different performance classes available
- Pressure sensor for reliable pneumatic level measurement
- Maximum operating reliability due to intelligent control unit (Duo)

### Description

The lifting station for faecal and faecal-free wastewater is equipped with a submersible pump and a backflow preventer. The collection tank made of permanently resistant polymer (PE) offers universal connection options and has a screwed access cover.

The station is controlled by a user-friendly control unit, which can be optionally integrated in the building management system via a potential-free contact or alarm and collective fault messages can be output via a GSM interface (Comfort control unit).

Type of wastewater:	wastewater with sewage
Installation situation:	free-standing set-up

### Version:

Type of system:	Single station
Shut-off valve:	Shut-off valve made of cast iron

### General characteristics:

Colour:	black
Standard:	EN 12050-1

### Tank:

Tank volume:	300 l
--------------	-------

Pressure pipe connection: vertical

#### **Pumping device:**

Pump: SPF 3000  
Number of pumps: 1  
Operating mode: S3 - 50 %  
Impeller type: Multi-vane impeller  
Length of mains cable for pump: 5 m

#### **Control:**

Control unit: Comfort  
Operating voltage: 400 V  
Mains frequency: 50 Hz  
Type of level measurement: pneumatic  
Level measurement instrument: Immersion pipe