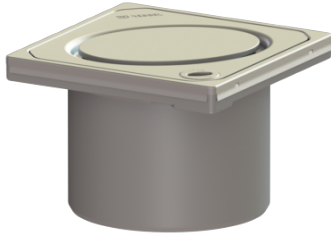


Upper section System 100, Oval design cover, 304 SST, L 15



Article information

Item no.: 27202
GTIN: 4026092028742
Price group: 10

Advantages

- Different covers selectable
- Stainless steel covers

Description

Used in combination with a drain body of the KESSEL modular system 100, the upper section is suitable for indoor point drainage.

Version:

System: 100

Dimensions:

Height: 90 mm

Coverage features:

| | |
|------------------|---------------------|
| Type of cover: | Design cover |
| Grating design: | Oval |
| Cover material: | 304 stainless steel |
| Colour of cover: | silver |
| Load class: | L 15 (EN 1253-1) |
| Height: | 16 mm |
| Surface: | ground |
| Locking: | Lock & Lift |

Grating:

| | |
|---------------|---------------------|
| Rim length: | 132 mm |
| Rim width: | 132 mm |
| Rim material: | 304 stainless steel |

Shape of upper section:
Upper section material:

square
ABS