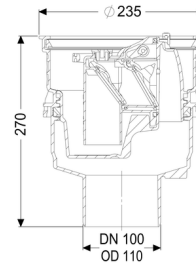
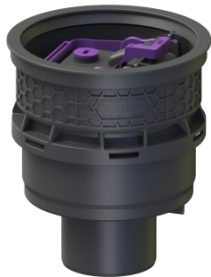


Universal Plus drain body vertical, with backwater valve



Article information

Item no.: 27660
 GTIN: 4026092096949
 Price group: 10

Description

In combination with an upper section, the polymer Universal Plus drain body is used for drainage of non-faecal wastewater and is equipped with a removable backwater valve with two backwater flaps, a one hand-lockable emergency closure and a sludge bucket. Including temporary protective cover.

Type of wastewater: wastewater without sewage
 Installation situation: floor slab installation

Version:

Emergency closure: yes
 Sealing water height: 60 mm
 Backwater protection: Type 5
 Number of mechanical backwater flaps: 2

General characteristics:

Nominal size (DN): 100
 Colour: black
 Standard: EN 1253, EN 13564

Dimensions:

Height:	270 mm
Cutout dimension, length:	310 mm
Cutout dimension, width:	310 mm
Diameter:	235 mm

Drain body:

Socket version:	vertical
-----------------	----------

Vertical adjustment:	vertically adjustable upper section
----------------------	-------------------------------------

Coverage features:

Sludge bucket:	yes
----------------	-----