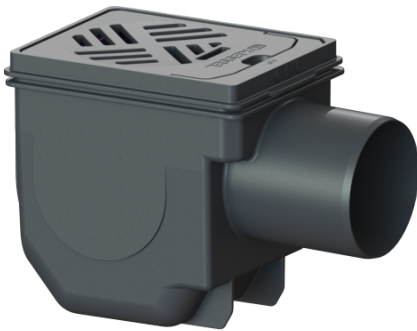


## Basement drain DN 100, Black grating, 150 x 190 mm



### Article information

Item no.: 33101  
GTIN: 4026092007860  
Price group: 10

### Advantages

- Integrated odour trap
- Including sludge bucket

### Description

The basement drain made of polymer for floor slab installation is equipped with an odour trap and a sludge bucket. The upper section with slotted grating is vertically adjustable.

#### Version:

Odour trap:	included
Sealing water height:	50 mm

#### General characteristics:

Nominal size (DN):	100
Outer diameter (OD):	110
Standard:	EN 1253-1

#### Dimensions:

Length:	285 mm
Width:	170 mm
Cutout dimension, length:	320 mm
Cutout dimension, width:	190 mm

#### Tank:

Installation depth:	210 - 240 mm
---------------------	--------------

#### Drain body:

Material of drain body:	PP
Socket version:	lateral
Vertical adjustment:	vertically adjustable upper section
Vertical adjustment:	25 - 55 mm

#### Coverage features:

Type of cover:	Slotted cover
Cover material:	Polymer
Colour of cover:	black
Load class:	K 3 (EN 1253-1)
Length:	150 mm
Width:	190 mm
Sludge bucket:	yes
Locking:	placed

#### Grating:

Rim length:	200 mm
Rim width:	159 mm
Rim material:	Polymer
Upper section material:	Polymer
Discharge rate (l/s) with 20 mm backwater:	1.8 l/s