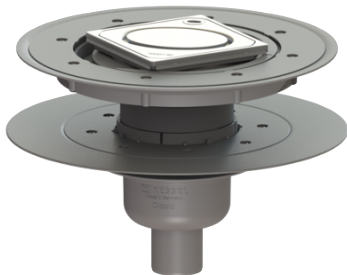


## Classic bathroom drain, upper section for combined waterproofing Gl fl., DN 50, vert., Slotted grating, K3



### Article information

Item no.: 40259.50  
GTIN: 4026092029503  
Price group: 10

### Description

The Classic bathroom drain is suitable for indoor floor drainage. The drain made of ABS is equipped with a telescopic, height-adjustable upper section made of polymer, a removable odour trap as well as a secure, reliably installed seal. Including upper section for combined waterproofing for alternative WP layer.

### Version:

|  |   |
|--|---|
| Odour trap:  | included  |
| Type of waterproofing layer:   | Waterproofing layer   |
| Waterproofing layer on the upper section:                                | Enclosed sealing collar to be glued (bd) according to DIN 18534 |
| Waterproofing layer on the drain body:                                   | Adhesive flange (suitable for moisture barriers)                |
| Water exposure class in accordance to DIN 18534-1 (up to and including): | W3-I  |
| Sealing water height:  | 50 mm   |

### General characteristics:

|                      |           |
|----------------------|-----------|
| Nominal size (DN):   | 50        |
| Outer diameter (OD): | 50        |
| Standard:            | EN 1253-1 |

### Dimensions:

|                           |        |
|---------------------------|--------|
| Length:                   | 332 mm |
| Width:                    | 332 mm |
| Cutout dimension, length: | 350 mm |
| Cutout dimension, width:  | 350 mm |

**Tank:**

Number of outlets: 1 ST

**Drain body:**

Material of drain body: ABS  
Socket version: vertical

Vertical adjustment: vertically adjustable upper section  
Vertical adjustment: 55 - 120 mm

**Coverage features:**

Type of cover: Slotted cover  
Cover material: 304 stainless steel  
Colour of cover: silver  
Load class: K 3 (EN 1253-1)  
Length: 95 mm  
Width: 95 mm  
Surface: Polished SST  
Locking: placed

**Grating:**

Rim length: 132 mm  
Rim width: 132 mm  
Rim material: ABS

Shape of upper section: square  
Upper section material: ABS  
Discharge rate (l/s) with 20 mm backwater: 0.8 l/s