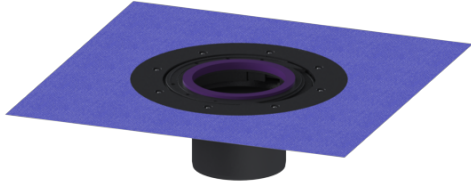


Extension section H: 120 mm, with glued flange



Article information

Item no.: 48900
GTIN: 4026092034620
Price group: 10

Description

Extension section with glued flange for alternative seals, side adjustable for adapting to the tiling pattern, including temporary protective cover

Version:

Seal: Lip seal

General characteristics:

Material: ABS
Colour: grey

Dimensions:

Diameter: 312 mm
Clear width (LW): 125