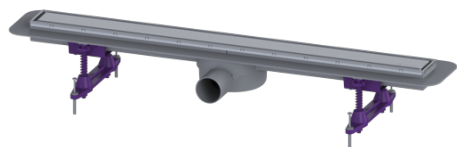


Ferrofix upper section glued flange Sys 200, closed cover, 304 SST



Article information

Item no.: 48954-S-V2A-KF

GTIN: 4026092090831

Price group: 70

Advantages

- Made of a particularly hygienic and mechanically highly resistant stainless steel
- Multiple combinations with suitable drain bodies

Description

Used in combination with a drain body of the KESSEL modular system 200, the Ferrofix stainless steel upper section with glued flange is suitable for indoor point drainage.

Version:

System:	200
Type of waterproofing layer:	Waterproofing layer
Waterproofing layer on the upper section:	Adhesive flange (suitable for moisture barriers)
Water exposure class in accordance to DIN 18534-1 (up to and including):	W3-I

Dimensions:

Height:	110 mm
Vertical adjustment:	vertically adjustable upper section

Coverage features:

Type of cover:	closed cover plate with drain slots
Cover material:	304 stainless steel
Load class:	L 15 (EN 1253-1)
Height:	15 mm
Surface:	Polished SST
Locking:	screwed

Grating:

Rim length: 200 mm

Rim width: 200 mm

Shape of upper section: square

Upper section material: 304 stainless steel