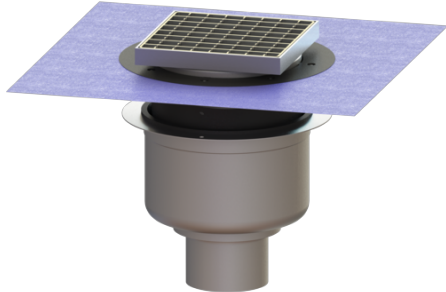


## Ferrofix floor drain Sys 200, vert., Waterproofing layer, Slotted grating



### Article information

Item no.: 55400.21  
GTIN: 4026092056578  
Price group: 70

### Advantages

- Made of particularly hygienic and mechanically highly resistant stainless steel

### Description

The Ferrofix stainless steel floor drain is used for point drainage and is equipped with a removable odour trap, a lip seal and a temporary protective cover.

The outlet socket is suitable for connection to SML cast iron pipes.

### Version:

System:	200
Odour trap:	included
Type of waterproofing layer:	Waterproofing layer

Waterproofing layer on the upper section:	Enclosed sealing collar to be glued (bd) according to DIN 18534
Waterproofing layer on the drain body:	Connection flange
Sealing water height:	70 mm

### General characteristics:

Nominal size (DN):	100
Outer diameter (OD):	110
Standard:	EN 1253-1

### Dimensions:

Length:	280 mm
Width:	280 mm

**Tank:**

Number of outlets: 1 ST

**Drain body:**

Material of drain body: Stainless steel 14301  
Socket version: vertical

Vertical adjustment: vertically adjustable upper section  
Vertical adjustment: 23 - 40 mm  
Upper section: adjustable in three dimensions

**Coverage features:**

Type of cover: Slotted grating  
Cover material: Stainless steel 14301  
Load class: L 15 (EN 1253-1)  
Length: 190 mm  
Width: 190 mm  
Height: 30 mm  
Locking: unlocked

**Grating:**

Rim length: 200 mm  
Rim width: 200 mm

Upper section material: ABS