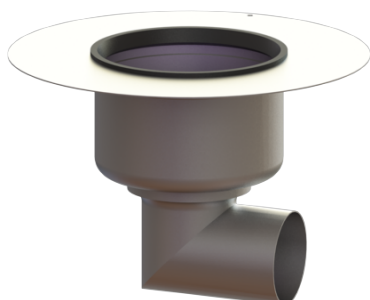


## Ferrofix drain body Sys 200, glued flange, Horizontal outlet



### Article information

Item no.: 55550-KF  
GTIN: 4026092090824  
Price group: 70

### Advantages

- Made of particularly hygienic and mechanically highly resistant stainless steel
- Variably combinable with upper sections

### Description

In combination with a System 200 upper section, the Ferrofix stainless steel drain body is used for point drainage and is equipped with a removable odour trap, a lip seal and a temporary protective cover.

The loose flange is used for clamping polymer and elastomer sealing sheets as well as for cold bitumen seals. The outlet socket is suitable for connection to SML cast iron pipes. Separate equipotential bonding is not necessary.

### Version:

System:	200
Odour trap:	included
Type of waterproofing layer:	Waterproofing layer
Waterproofing layer on the drain body:	Adhesive flange (suitable for moisture barriers)
Sealing water height:	70 mm

### General characteristics:

Nominal size (DN):	100
Standard:	EN 1253-1

### Dimensions:

Length:	420 mm
Width:	420 mm
Height:	300 mm

**Tank:**

Number of outlets: 1 ST

**Drain body:**

Material of drain body: 304 stainless steel  
Socket version: lateral