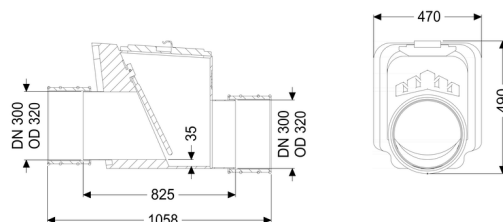
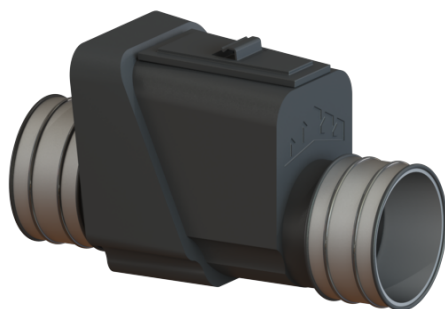


Backwater valve Multitube DN 300, 1 flap



Article information

Item no.: 71300
GTIN: 4026092011614
Price group: 10

Advantages

- Inlet and outlet with pipe clamp
- Bridgeable outer diameter at least nominal width + 20 mm
- Simple maintenance and cleaning

Description

The backwater valve for rainwater is equipped with a mechanical flap which closes automatically in the event of backwater.

Type of wastewater:

wastewater without sewage

Installation situation:

underground installation

Delivery state:

installation-ready

Number of mechanical backwater flaps:

1

General characteristics:

Nominal size (DN):

300

Outer diameter (OD):

320

Note on nominal size:

Bridgeable outer diameter of pipe clamps

Colour:

black

Dimensions:

Length:

825 mm

Width:

470 mm

Height:

490 mm

Vertical drop between inlet and outlet:

35 mm

Cover locking:

screwed

