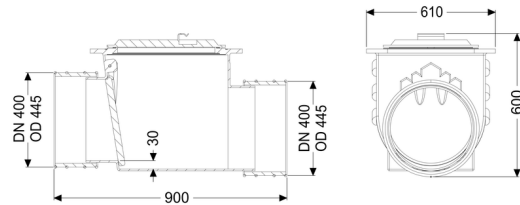
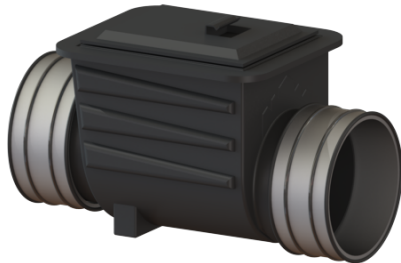


Backwater valve Multitube DN 400, 1 flap



Article information

Item no.: 71400
 GTIN: 4026092011621
 Price group: 10

Advantages

- Inlet and outlet with pipe clamp
- Bridgeable outer diameter at least nominal width + 20 mm
- Simple maintenance and cleaning

Description

The backwater valve for rainwater is equipped with a mechanical flap which closes automatically in the event of backwater.

| | |
|---------------------------------------|---------------------------|
| Type of wastewater: | wastewater without sewage |
| Installation situation: | underground installation |
| Delivery state: | installation-ready |
| Number of mechanical backwater flaps: | 1 |

General characteristics:

| | |
|-----------------------|--|
| Nominal size (DN): | 400 |
| Outer diameter (OD): | 410 |
| Note on nominal size: | Bridgeable outer diameter of pipe clamps |
| Colour: | black |

Dimensions:

| | |
|---------|--------|
| Length: | 900 mm |
| Width: | 610 mm |
| Height: | 600 mm |

| | |
|---|---------|
| Vertical drop between inlet and outlet: | 30 mm |
| Cover locking: | screwed |

