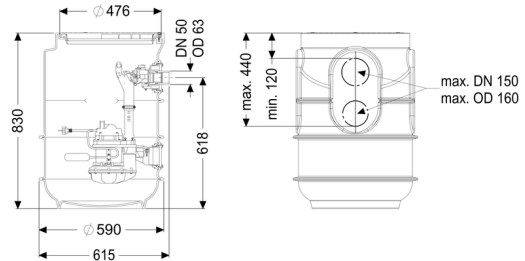


## Pumping station Aquapump Small Mono, Basic, GTF 1250



### Article information

Item no.: 829850  
 GTIN: 4026092092989  
 Price group: 20

### Advantages

- Including backflow preventer for the pressure pipe
- Including openings for inlet, ventilation and cable duct
- With pedestrian class polymer cover plate

### Description

The pumping station for faecal wastewater is suitable for underground installation and is equipped with a backflow preventer for the pressure pipe. The PE tank is resistant to domestic wastewater and includes a pedestrian class polymer cover plate. The pump with multi-vane impeller ensures maximum operating reliability. The components are pre-assembled for final assembly on site. Including openings for inlet.

- tank made of PE, resistant to domestic wastewater
- with a pedestrian class cover plate made of polymer
- including backflow preventer for the pressure pipe
- including openings for inlet, ventilation and cable duct
- pump/s with multi-vane impeller for maximum operating reliability

Type of wastewater: wastewater without sewage  
 Installation situation: underground installation

### Version:

Type of system: Single station  
 Installation: Wet installation  
 Pump control: Float switch  
 Backflow preventer: integrated

Delivery state: Pre-mounted for final assembly on site (pumps and sensor system must be fitted on site and control unit must be connected)

### General characteristics:

Colour: black  
Standard: EN 12050-2

### Dimensions:

Length: 590 mm  
Width: 590 mm  
Height: 830 mm

### Tank:

Inlet max. scoring (DN): 100 mm  
Pumping volume: 25 l  
Pressure pipe connection (DN): 50 mm  
Pressure pipe connection (OD): 63 mm  
Installation depth: 830 mm

### Coverage features:

Type of cover: Round cover plate  
Colour of cover: black  
Length: 615 mm  
Width: 600 mm  
Locking: lockable

Free passage: 30 mm

### Pumping device:

Pump: GTF 1250  
Number of pumps: 1  
Max. pumping capacity: 20 m<sup>3</sup>/h  
Max. pumping height: 11 m  
Operating voltage: 230 V  
Mains frequency: 50 Hz  
Operating mode: S3 - 50 %  
Power P1: 1.3 kW  
Power P2: 0.8 kW  
Speed: 2,700 U/min  
Type of fuse required (electrical protection): C 16 A

Max. temperature (permanent) of conveyed material:	40 °C
Connection type:	Schuko (earthed contact) 2-pin
Weight:	10 kg
Impeller type:	Multi-vane impeller
Length of mains cable for pump:	10 m
Rated current:	5.4 A
Protection class (pump):	IP 68 (3m)
Protection class:	I
Type of pump connection cable:	H07RN-F 3G 1.0 mm <sup>2</sup>
Temperature monitoring:	integrated
null:	260 mm
null:	160 mm
Insulation class:	F

**Control:**

Motor protection switch:	yes
--------------------------	-----