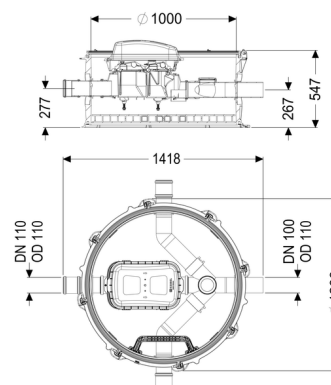


## KESSEL Controfix backwater technical module DN 100, two inlets in the direction of flow



### Article information

Item no.: 851003  
 GTIN: 4026092079348  
 Price group: 60

### Advantages

- Komfort: expensive living or useful space is not lost
- No system noises or unpleasant odours and soiling in the building
- Straightforward installation thanks to low weight of the combined engineering chamber modules and variable upper sections for adaptation to the ground level
- Simple conversion to Staufix SWA, Staufix FKA or Pumpfix F

### Description

The backwater technical module is equipped with an integrated clean out Controfix and access steps.

Thanks to the modular KESSEL system, the clean out can easily be converted to a Staufix SWA Premium backwater valve, Staufix FKA or Pumpfix F backwater pumping station.

Type of wastewater:

wastewater with sewage

Installation situation:

underground installation

Delivery state:

Installation-ready (connection parts must be connected on site)

### General characteristics:

Colour:

black

Approval:

Z-42.1-527

**Dimensions:**

Width:	1,200 mm
Height:	520 mm

**Tank:**

Number of inlets:	3 ST
Inlet nominal size (DN):	100
Number of outlets:	1 ST
Outlet nominal size (DN):	100
Distance from centre of outlet pipe to tank bottom:	267 mm
Distance from centre of inlet pipe to tank bottom:	277 mm
Tank width max.:	1,390 mm
Channel:	continuous channel with inlets in the direction of flow right and left 90 degrees
Groundwater resistant from lower edge of base section:	3,000 mm
Clear width of tank (LW):	1,000 mm
Chamber system:	modular chamber
Vertical drop between inlet and outlet:	9 mm