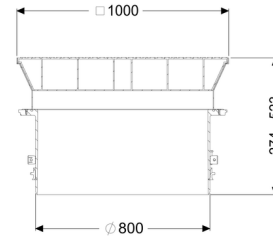
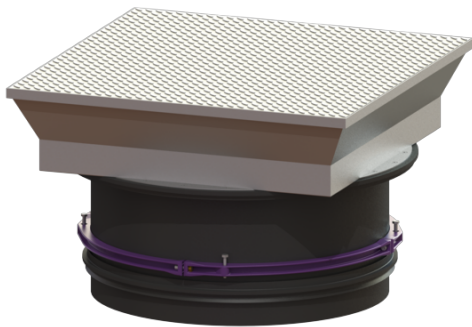


Upper section with cover plate LW 800, Class B



Article information

Item no.: 8740179
 GTIN: 4026092070451
 Price group: 60

Description

Upper section for continuous height and level compensation for chamber module LW 1000, consisting of a flush-to-ground cover for setting in concrete, with inner joints, all-round frost- and weather-proof seal, gas spring as an opening aid incl. self-effective arresting device. Suitable for taper with 800 mm access.

General characteristics:

Material: Polymer, Stainless steel
 Colour: black

Dimensions:

Clear width (LW): 800
 Adjustment range: 274 - 523 mm

Coverage features:

Load class: B 125 (EN 124)
 Surface: Stainless steel
 Locking: screwed