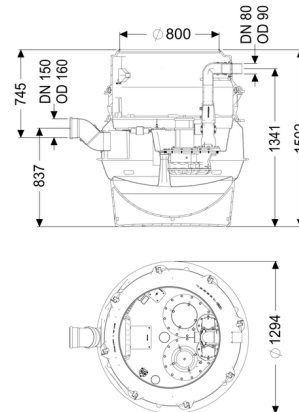


Pumping station Aquapump F XL Tronic SPF1400-S3, D0



Article information

Item no.: 8742012
 GTIN: 4026092069479
 Price group: 60

Advantages

- Maximum safety
- Flexible installation
- Hygienic advantages for maintenance and repair

Description

The pumping station for faecal and faecal-free wastewater is equipped with a submersible pump, a backflow preventer and a shut-off valve for the pressure pipe. The collection tank made of permanently resistant polymer (PE) has a closed pump tank (dry installation) with a screwed-on access cover.

The station is controlled by a user-friendly control unit, which is optionally integrated in the building management system via a potential-free contact. Alternatively, alarm and collective fault messages can be output via a GSM interface.

The KESSEL modular system provides different upper sections and engineering chamber options as accessories.

Type of wastewater:

wastewater with sewage

Installation situation:

underground installation, floor slab installation

Version:

Type of system:

Single station

Installation:

Dry installation

Shut-off valve:

Shut-off valve made of polymer

Pump control:

Control unit

Backflow preventer:

integrated

Access steps:

yes

Note on installation depth:

Version with lowest installation height

Delivery state:

Pre-mounted for final assembly on site (pumps and sensor system must be fitted on site and control unit must be connected)

General characteristics:

Colour: black
Standard: EN 12050-1

Dimensions:

Length: 1,295 mm
Width: 1,295 mm
Height: 1,500 mm

Tank:

Number of inlets: 1 ST
Inlet nominal size (DN): 150
Inlet nominal size (OD): 160 mm
Distance pipe bottom inlet to tank bottom: 753 mm
Distance from centre of outlet pipe to tank bottom: 1,343 mm
Distance from centre of inlet pipe to tank bottom: 833 mm
Tank volume: 335 l
Pumping volume: 160 l
Pressure pipe connection: horizontal
Pressure pipe connection (DN): 80 mm
Pressure pipe connection (OD): 90 mm
Venting connection (DN): 70 mm
Groundwater resistant from lower edge of base section: 3,000 mm
Clear width of tank (LW): 1,000 mm
Clear width of entry (LW): 800 mm

Free passage: 40 mm

Pumping device:

Pump: SPF 1400
Number of pumps: 1
Max. pumping capacity: 38 m³/h
Max. pumping height: 7 m
Operating mode: S3 - 50 %

| | |
|--|--------------------------------|
| Power P1: | 1.6 kW |
| Power P2: | 1.1 kW |
| Speed: | 1,370 U/min |
| Max. temperature (permanent) of conveyed material: | 40 °C |
| Connection type: | coded plug |
| Weight: | 25 kg |
| Impeller type: | Multi-vane impeller |
| Length of mains cable for pump: | 10 m |
| Rated current: | 7.3 A |
| Protection class (pump): | IP 68 (3m/48h) |
| Protection class: | I |
| Type of pump connection cable: | H07RN-F 3G 1.5 mm ² |
| Temperature monitoring: | integrated |
| Cos phi - power factor: | 0.98 |
| Insulation class: | F |

Control:

| | |
|--|----------------|
| Control unit: | Comfort |
| Operating voltage: | 230 V |
| Mains frequency: | 50 Hz |
| Self-diagnosis system (SDS): | yes |
| Battery buffering: | yes |
| Multi-line display: | yes |
| Log book function: | yes |
| USB interface: | yes |
| GSM interface: | yes |
| Potential-free contact: | optional |
| Type of fuse required (electrical protection): | C 16 A |
| Protection class control unit: | IP 54 |
| Length of mains cable for control unit: | 1.4 m |
| Type of level measurement: | pneumatic |
| Level measurement instrument: | Immersion pipe |
| Alarm sensor: | Immersion pipe |