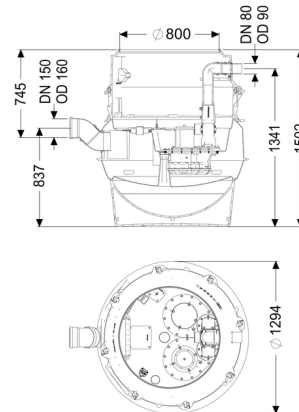


Pumping station Aquapump F XL Tronic, SPF 1500-S3, D0



Article information

Item no.: 8742013
 GTIN: 4026092069493
 Price group: 60

Advantages

- Maximum safety
- Flexible installation
- Hygienic advantages for maintenance and repair

Description

The pumping station for faecal and faecal-free wastewater is equipped with a submersible pump, a backflow preventer and a shut-off valve for the pressure pipe. The collection tank made of permanently resistant polymer (PE) has a closed pump tank (dry installation) with a screwed-on access cover.

The station is controlled by a user-friendly control unit, which is optionally integrated in the building management system via a potential-free contact. Alternatively, alarm and collective fault messages can be output via a GSM interface.

The KESSEL modular system provides different upper sections and engineering chamber options as accessories.

Type of wastewater:

wastewater with sewage

Installation situation:

underground installation, floor slab installation

Version:

Type of system:

Single station

Installation:

Dry installation

Shut-off valve:

Shut-off valve made of polymer

Pump control:

Control unit

Backflow preventer:

integrated

Access steps:

yes

Note on installation depth:

Version with lowest installation height

Delivery state:

Pre-mounted for final assembly on site (pumps and sensor system must be fitted on site and control unit must be connected)

General characteristics:

Colour:

black

Standard:

EN 12050-1

Dimensions:

Length:

1,295 mm

Width:

1,295 mm

Height:

1,500 mm

Tank:

Number of inlets:

1 ST

Inlet nominal size (DN):

150

Inlet nominal size (OD):

160 mm

Distance pipe bottom inlet to tank bottom:

753 mm

Distance from centre of outlet pipe to tank bottom:

1,343 mm

Distance from centre of inlet pipe to tank bottom:

833 mm

Tank volume:

335 l

Pumping volume:

160 l

Pressure pipe connection:

horizontal

Pressure pipe connection (DN):

80 mm

Pressure pipe connection (OD):

90 mm

Venting connection (DN):

70 mm

Groundwater resistant from lower edge of base section:

3,000 mm

Clear width of tank (LW):

1,000 mm

Clear width of entry (LW):

800 mm

Free passage:

40 mm

Pumping device:

Pump:

SPF 1500

Number of pumps:

1

Max. pumping capacity:

40 m³/h

Max. pumping height:

8 m

Operating mode:

S3 - 50 %

Power P1:	1.4 kW
Power P2:	1.1 kW
Speed:	1,415 U/min
Max. temperature (permanent) of conveyed material:	40 °C
Connection type:	Direct connection
Weight:	24 kg
Impeller type:	Multi-vane impeller
Length of mains cable for pump:	10 m
Rated current:	2.7 A
Protection class (pump):	IP 68 (3m/48h)
Protection class:	I
Type of pump connection cable:	H07RN-F 7G 1.5 mm ²
Temperature monitoring:	integrated
Cos phi - power factor:	0.77
Insulation class:	F

Control:

Control unit:	Comfort
Operating voltage:	400 V
Mains frequency:	50 Hz
Self-diagnosis system (SDS):	yes
Battery buffering:	yes
Multi-line display:	yes
Log book function:	yes
GSM interface:	yes
Potential-free contact:	yes
Type of fuse required (electrical protection):	3 x C 16 A
Motor protection switch:	yes
Protection class control unit:	IP 54
Length of mains cable for control unit:	0 m
Type of level measurement:	pneumatic
Level measurement instrument:	Immersion pipe
Alarm sensor:	Immersion pipe