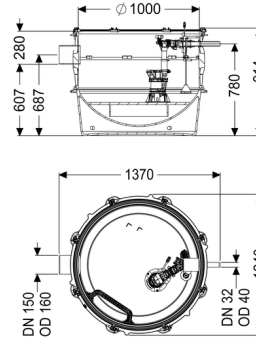
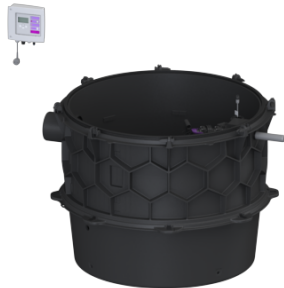


## Pumping station Aquapump XL Mono, GTF 600-S1, Subm. pressure switch



### Article information

Item no.: 8743005  
 GTIN: 4026092075623  
 Price group: 60

### Advantages

- Maximum safety
- Flexible installation
- Also handles large quantities of faecal-free wastewater

### Description

The pumping station for faecal-free wastewater is equipped with a submersible pump and a backflow preventer. The collection tank made of permanently resistant polymer (PE) has an open pump tank with universal connection options. Quick-release closures enable the integrated components to be removed easily.

The station is controlled by a user-friendly control unit, which is optionally integrated in the building management system via a potential-free contact. Alternatively, alarm and collective fault messages can be output via a GSM interface.

The KESSEL modular system provides different engineering chamber options as accessories for the further layout.

### Stainless steel pump removal chains available as accessory for each installation depth - Article number:

680528 = Length 2 m  
 680529 = Length 3 m  
 680530 = Length 4 m  
 680531 = Length 5 m

Type of wastewater:  
 Installation situation:

wastewater without sewage  
 underground installation, floor slab installation

**Version:**

Type of system:	Single station
Installation:	Wet installation
Shut-off valve:	without shut-off valve
Pump control:	Control unit
Backflow preventer:	integrated
Access steps:	yes
Note on installation depth:	in combination with a chamber module
Passage seal for ventilation pipe (DN):	100 mm
Passage seal for conduit pipe (DN):	100 mm
Delivery state:	Pre-mounted for final assembly on site (pumps and sensor system must be fitted on site and control unit must be connected)

**General characteristics:**

Colour:	black
Standard:	EN 12050-2

**Dimensions:**

Length:	1,330 mm
Width:	1,240 mm
Height:	914 mm

**Tank:**

Number of inlets:	1 ST
Inlet nominal size (DN):	150
Inlet nominal size (OD):	160 mm
Inlet max. scoring (DN):	150 mm
Distance pipe bottom inlet to tank bottom:	607 mm
Distance from centre of outlet pipe to tank bottom:	780 mm
Distance from centre of inlet pipe to tank bottom:	687 mm
Pumping volume:	90 l
Pressure pipe connection:	horizontal
Pressure pipe connection (DN):	32 mm
Pressure pipe connection (OD):	40 mm
Groundwater resistant from lower edge of base section:	3,000 mm
Clear width of tank (LW):	1,000 mm

**Pumping device:**

Pump:	GTF 600
Number of pumps:	1
Max. pumping capacity:	12 m <sup>3</sup> /h
Max. pumping height:	8 m
Operating voltage:	230 V
Mains frequency:	50 Hz
Operating mode:	S1
Power P1:	0.6 kW
Power P2:	0.36 kW
Speed:	2,800 U/min
Type of fuse required (electrical protection):	C 16 A
Max. temperature (permanent) of conveyed material:	40 °C
Connection type:	coded plug
Weight:	6 kg
Impeller type:	Multi-vane impeller
Length of mains cable for pump:	10 m
Rated current:	2.7 A
Protection class (pump):	IP 68 (3m)
Protection class:	I
Type of pump connection cable:	H07RN-F 3G 1.0 mm <sup>2</sup>
Temperature monitoring:	integrated
Cos phi - power factor:	0.91
Insulation class:	F

**Control:**

Control unit:	Comfort
Operating voltage:	230 V
Mains frequency:	50 Hz
Self-diagnosis system (SDS):	yes
Battery buffering:	yes
Multi-line display:	yes
Log book function:	yes
USB interface:	yes
GSM interface:	yes
Potential-free contact:	optional
Type of fuse required (electrical protection):	C 16 A
Protection class control unit:	IP 54
Length of mains cable for control unit:	1.4 m
Type of level measurement:	pneumatic
Level measurement instrument:	Submersible pressure switch
Alarm sensor:	optical probe