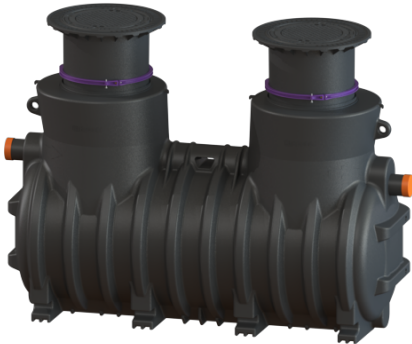


## Grease separator EasyClean ground NS 10, Standard, 740-1175 mm, Class D



### Article information

Item no.: 93010/120D  
GTIN: 4026092025802  
Price group: 60

### Advantages

- Vertically adjustable upper section with odour-tight cover plates in various load classes
- Waterproof, resistant to aggressive wastewater
- Low-maintenance operation

### Description

The separator for greasy wastewater is suitable for installation in the ground and comes without metallic components in the tank. The collecting tank made of permanently resistant polymer (PE) is equipped with an integrated sludge trap and has a rounded base for fast and clean disposal. Access for cleaning and maintenance work is possible via one or several service access covers.

Manual disposal is carried out with the tank open.

20 year polyethylene warranty.

Installation situation:

underground installation

### Version:

Type of disposal:	manual with suction hose
Disposal variant:	Standard
Refill inlet in accordance with DIN 1988:	no
Nominal size (NS):	10
Inspection window:	no
Shredder-Mix-System:	no
SonicControl:	no
Load-bearing capacity (DIN 19901):	E4
Note on installation depth:	Installation in the ground, frost-free depth 1200 mm
Delivery state:	Installation-ready (connection parts must be connected on site)

**General characteristics:**

Material:	PE
Standard:	EN 1825

**Dimensions:**

Max. length:	3,062 mm
Required access area, length:	2,910 mm
Required access area, width:	1,200 mm
T-DSC:	220 mm
DSC:	700 - 1,500 mm

**Tank:**

Inlet nominal size (DN):	150
Inlet nominal size (OD):	160 mm
Outlet nominal size (DN):	150
Outlet nominal size (OD):	160 mm
Distance pipe bottom inlet to tank bottom:	1,100 mm
Distance pipe bottom outlet to tank bottom:	1,030 mm
Installation depth:	740 - 1,175 mm
Groundwater resistant from lower edge of base section:	1,320 mm
Clear width of entry (LW):	600 mm
Chamber system:	Cistern
Connection inlet/outlet sockets:	PE-HD pipes in accordance with DIN 19537, PVC-KG pipes in accordance with DIN 19534, PP or AS
Vertical adjustment:	vertically adjustable upper section, can be tilted by 5 degrees

**Coverage features:**

Type of cover:	Cover plate
Cover material:	Grey iron
Colour of cover:	black
Load class:	D 400 (EN 124)
Height:	121 mm
Tightness:	odour-tight and surface water resistant
Locking:	locked

**Wastewater contents:**

Separator contents:	1,600 l
Total volume:	2,600 l

Contents of sludge trap:	1,000 l
Storage quantity of grease:	400 l

**Control:**

Control unit:	no
---------------	----