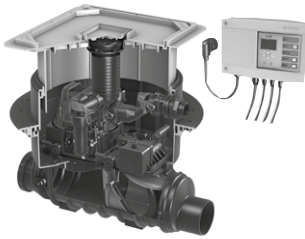


Backwater lifting station *Ecolift*

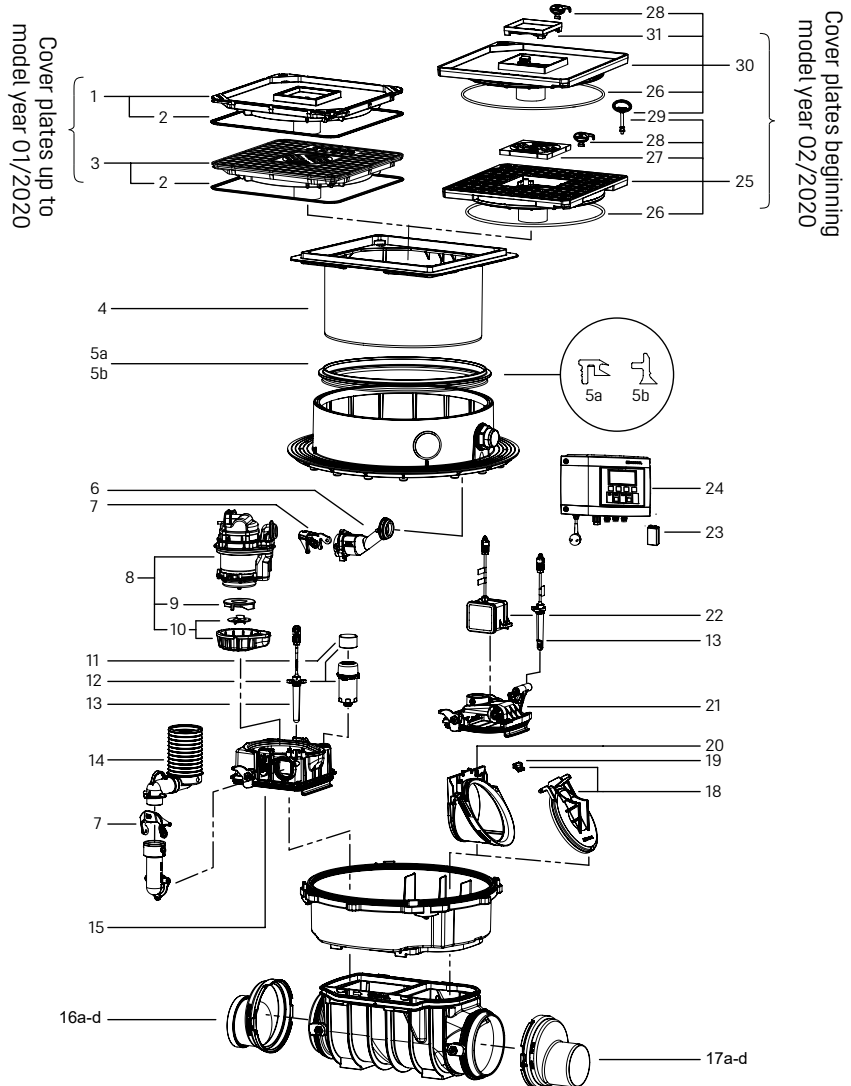
Installation in the floor slab



32



33



Item	Designation	Art. no.
1	Cover plate, tileable with drain, <i>Multistop</i> and seal	83 045
2	Seal for cover plate 384 × 384 mm	680 025
3	Cover plate, black with drain, <i>Multistop</i> and seal	83 046
4	Upper section, Ø 330 mm, height-adjustable up to 170 mm, beginning 02/2020	830 061
5a	Seal for upper section up to model year 06/2014	680 026
5b	Seal for upper section beginning model year 07/2014	680 150
6	Pressure pipe connection <i>Ecolift</i> , installation in the floor slab	680 105
7	One-handed closure for backflow preventer	680 018
8	Replacement pump KTP/SPZ 1000 230 V, with 5 m cable	28 351
9	Impeller KTP/SPZ 1000, without intake cover	680 035
10	Replacement macerator set	28 075
11	Activated carbon filter (5 ea.)	28 061
12	Ventilation with activated carbon filter	28 060
13	Spare parts set, optical probe, 5 m cable with 3 adapters	80 888
14	Connector drain Ø 70, with seal	680 215
15	Lockable cover Comfort, inlet side, with drain connection	28 054
16	Socket incl. seal	
16a	Ø 110	83 085
16b	Ø 125	83 086
16c	Ø 160	83 087
16d	Ø 200	83 088

Item	Designation	Art. no.
17	Spigot incl. seal	
17a	Ø 110	83 081
17b	Ø 125	83 082
17c	Ø 160	83 083
17d	Ø 200	83 084
18	Motor-driven backwater flap, with flap holder	80 038
19	Flap holder for motor-driven and mechanical flap	680 101
20	Slide-in flap housing for motor-driven flap, with flap holder	80 039
21	Lockabe cover <i>Ecolift</i> , outlet side	21 056
22	Motor, ready to plug in, 5 m cable	80 076
23	Battery, 9 V block	680 034
24	Control unit, Comfort 230 V, <i>Ecolift</i> , <i>Pumpfix F</i>	28 071
25	Cover plate, black with drain body, <i>Multistop</i> , 366 × 366 mm, beginning 02/2020	830 046
26	Seal for cover plate System 330 mm	686 114
27	Slotted insert grating, 138 × 138 mm, polymer	60 101S
28	Release key for <i>Lock & Lift</i> insert gratings	680 702
29	Release key for <i>Lock & Lift</i> cover plates	67 007
30	Cover plate, tileable with drain body, <i>Multistop</i> , 366 × 366 mm, beginning 02/2020	830 045
31	Drain cover, tileable, <i>Lock & Lift</i> , ABS	680 224
32	Seal set for <i>Pumpfix F</i> and <i>Ecolift</i>	70 319
33	High-performance grease for backwater valves, 12 g	681 001