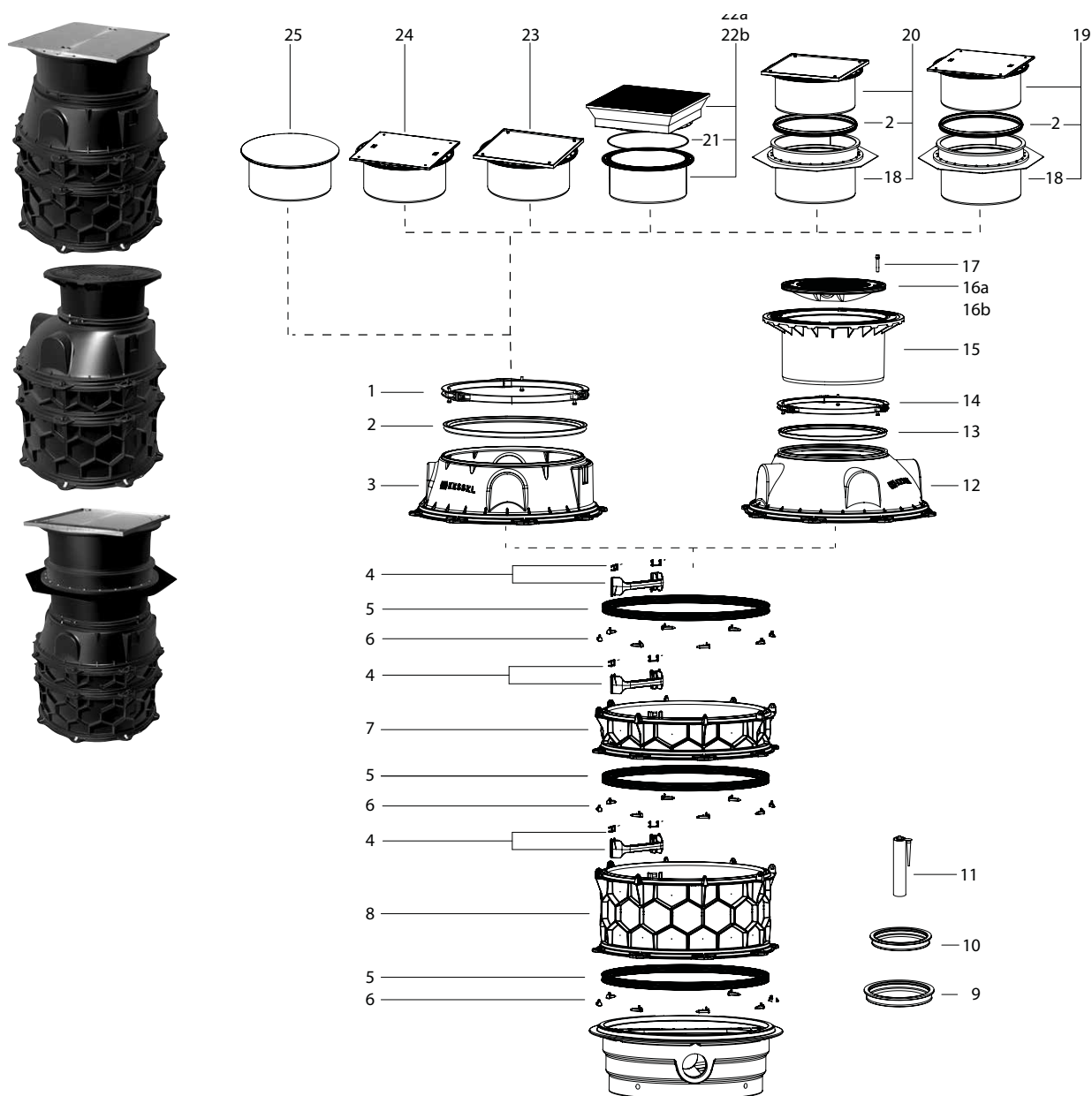


# Engineering chamber system

## Installation in the ground



Item	Designation	Art. no.	Item	Designation	Art. no.
1	Clamping ring for upper sections, Ø 800 mm	680 568	16	Cover plate	
2	Seal for chamber module Ø 1000, Ø 800 mm	680 375	16a	class B, made of grey cast iron	860 118
3	Chamber taper section Ø 800 chamber module access	680 430	16b	class D, made of grey cast iron, locked	860 136
4	Hook-in access step for chamber module with protection	680 376	17	Screw M10×35 (1 St.)	860 900
5	Seal for intermediate section	680 125	18	Waterproof extension with sealing mat, for chamber module	680 378
6	Connection bolt set (10 ea.)	680 373	19	Upper section with cover plate Ø 800 with waterproof flange, cl. A/L 15 *	874 0178
7	Intermediate section 250 mm with access steps incl. protection	680 370	20	Upper section with cover plate Ø 800 tileable with waterproof flange, class K3 *	874 0176
8	Intermediate section 500 mm with access steps incl. protection	680 371	21	Seal for upper section	680 836
9	Conduit pipe seal, Ø 110	850 117	22	Upper section with cover plate, square, Ø 800	
10	Conduit pipe seal, Ø 75	850 116	22a	for class B	874 0179
11	Glue for seal (Item 21)	680 940	22b	for class D	874 0180
12	Chamber taper section Ø 600 chamber module access	680 431	23	Upper section with cover plate Ø 800 tileable, class K3 *	874 0175
13	Seal for chamber module, Ø 600 mm	680 374	24	Upper section with cover plate Ø 800, class A/L 15*	874 0177
14	Clamping ring for upper sections Ø 600 mm	680 276	25	Upper section with cover plate Ø 800, round, class K3*	874 0181
15	Upper section, Ø 600 mm	680 569			

\* For spare parts for upper sections, see following pages