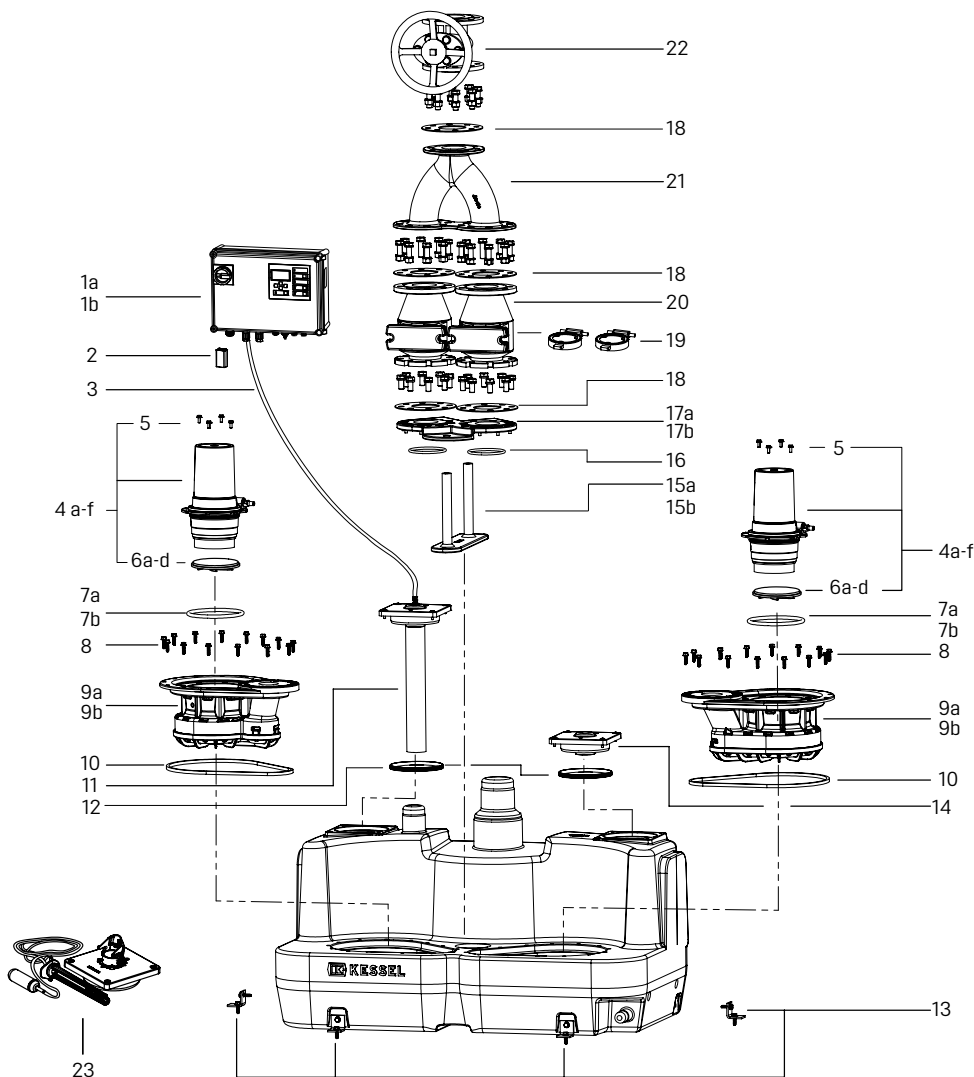
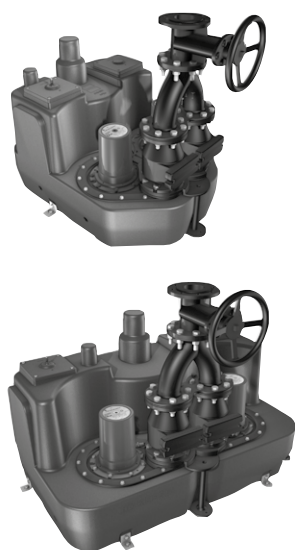


Lifting station *Aqualift F XL*, cast iron fittings

Free-standing installation



Item	Designation	Art. no.
1	Control unit	
1a	Comfort, <i>Aqualift Duo</i> , 400 V, 2 × 4.0 – 6.3 A, for SPF 3000	28 758
1b	Comfort, <i>Aqualift Duo</i> , 400 V, 2 × 6.3 – 10.0 A, for SPF 4500 and 5500	28 783
2	Battery, 9 V block	680 034
3	Pressure hose, 6 × 4 mm, 100 natural (sold by the metre)	680 071
4	Motor with impeller	
4a	SPF 3000, S3, 400 V, 5 m cable	28 027
4b	SPF 3000, S1, 400 V, 5 m cable	28 064
4c	SPF 4500, S3, 400 V, 5 m cable	28 026
4d	SPF 4500, S1, 400 V, 5 m cable	28 063
4e	SPF 5500, S3, 400 V, 5 m cable	28 025
4f	SPF 5500E, S3, 400 V, 5 m cable	680 727
5	Bolt set for pump (4 ea.) *	28 609
6	Impeller	
6a	SPF 3000, for <i>Aqualift</i> lifting stations	680 642
6b	SPF 4500, for <i>Aqualift</i> lifting stations	680 641
6c	SPF 5500, for <i>Aqualift</i> lifting stations	680 716
6d	SPF 5500E, for <i>Aqualift</i> lifting stations	681 039
7	Flange seal	

Item	Designation	Art. no.
7a	for SPF 1400 – 4500 and SPF 5500E	680 052
7b	for SPF 5500	680 120
8	Screw set, galvanised (14 ea.)	680 047
9	Pump flange	
9a	for SPF 1400 – SPF 4500 and SPF 5500E	680 050
9b	for SPF 5500	680 550
10	Pump flange seal, <i>Aqualift F</i>	680 045
11	Immersion pipe <i>Aqualift F XL</i> , 5 m hose	28 050
12	Seal Ø 160 for access cover	680 003
13	Attachment bracket with screws (2 ea.)	680 046
14	Cleaning cover, screwed, Ø 160	680 421
15	Support bracket a: for 200 l tank b: for 300/450 l tank	on request
16	Seal Ø 110	680 001
17	Mounting plate a: for 200 l tank b: for 300/450 l tank	on request
18	Flat seal Ø 80	28 043
19	Non-return flap made of polymer, Ø 80	28 074
20	Backflow preventer, Ø 80, grey iron	28 021
21	Y-pipe flange coupling, Ø 80	28 042
22	Shut-off valve Ø 80, grey cast iron, with handwheel	28 041
23	Float switch, additional alarm for lifting stations	28 014

* Must be ordered for pump SPF 5500 2 ×.