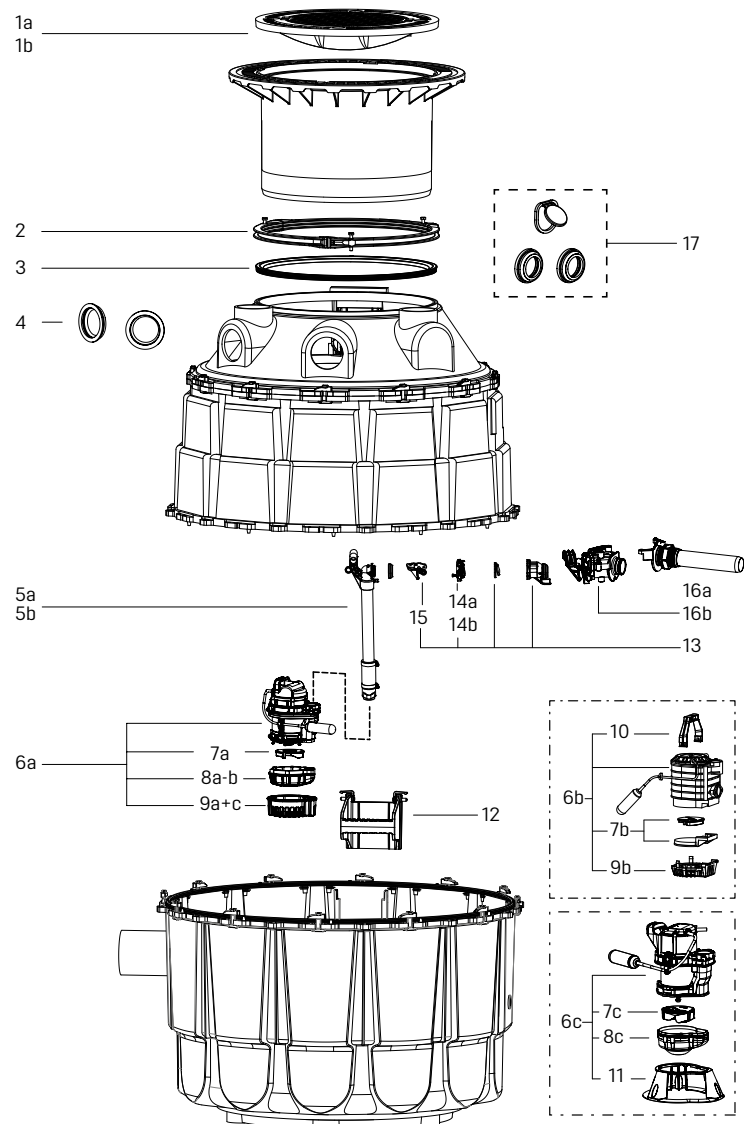


Pumping station *Aqualift S* in the chamber system Ø 1000

with float switch, installation in the ground, up to model year 12/2016



Item	Designation	Art. no.	Item	Designation	Art. no.
1	Cover		8b	for KTP 1000, ball passage 10 mm, beginning model year 04/2014	680 364
1a	class B, grey cast iron with concrete fill	860 131	8c	for GTF 600, free ball passage 30 mm	680 888
1b	class D, grey cast iron, <i>Aqualift S Mono</i>	680 059	9	Intake cage	
2	Clamping ring for upper sections Ø 600 mm	680 276	9a	for KTP 1000, with push-fit fastener	680 106
3	Seal for upper section Ø 600	680 277	9b	for KTP 500, with push-fit fastener	680 004
4	Conduit pipe seal, Ø 110	850 117	9c	for KTP 1000, for faecal-free wastewater, 10 mm	680 361
5	Riser		10	Pump handle for submersible pump KTP 500	680 007
5a	up to model year 01/2016: Riser length 800 - 1250 mm	680 112	11	Pump stand GTF 600, free ball passage 30 mm	680 889
5b	beginning model year 02/2016: Riser length 800 - 1250 mm	680 449	12	Access steps made of polymer, with fastening bolt	860 110
6	Replacement pump		13	Flap holder with non-return flap	680 457
6a	KTP 1000 with float switch	28 860	14	Pump connection suitable for pumping stations	
6b	KTP 500	*	14a	up to model year 12/2015	680 065
6c	GTF 600, with float switch	680 880	14b	beginning model year 01/2016	680 476
7	Impeller		15	One-handed closure for backflow preventer	680 018
7a	for KTP 1000, without intake cover, without spiral housing	680 035	16	Pump coupling <i>Aqualift S Mono</i>	
7b	for KTP 500, with intake cover	28 038	16a	up to model year 01/2016	680 109
7c	for KTP 600, free ball passage 30 mm	680 887	16b	beginning model year 02/2016	680 479
8	Spiral housing		17	Seal set for <i>Aqualift S</i> Ø 600/1000, Mono	680 490
8a	for KTP 1000 up to model year 03/2014	680 118			

* Will be replaced by new pump GTF 600, art. no. 680 880