

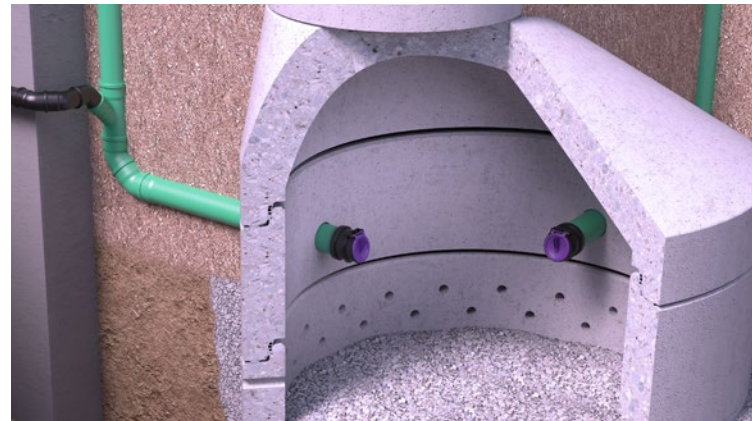
Backwater valve Pipe flap valve

The dependable solution for open end drainage pipes.

The self-actuating pipe flap valves prevent undesirable backwash into wastewater pipes in the event of backwater or high water levels. They are made entirely of polymer and so are 100 % corrosion-free. The pipe flap valves are available in various sizes from Ø 110 mm to Ø 1.000 mm.

Area of application

Pipe flap valves are used in wastewater without sewage, for example in seawater and freshwater environments. Here they serve as a backwater valve in horizontal pipes leading into chambers or outdoors.



Pipe flap valve

for connection to open end drainage pipes



Flap self-closing. Inlet/outlet for connection to PVC pipe according to EN 1451-1. KESSEL-Pipe Flap, manufactured from polymer, with free hanging self activating backwater flap. For connection to open end of pipe, gasketed inlet for push-fit connection to PVC drainage piping according to DIN 19534 and PE-HD piping according to DIN 19537.



Illustration shows Ø 160

Illustration shows Ø 250

Illustration shows Ø 800

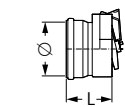


Illustration shows Ø 110 - Ø 200

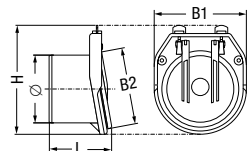


Illustration shows Ø 250 - Ø 638

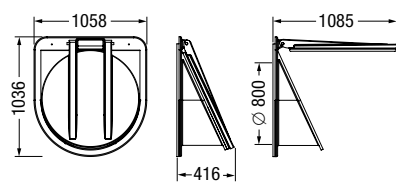


Illustration shows Ø 800

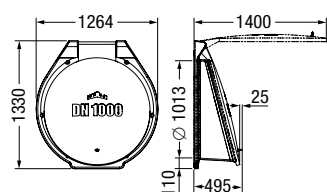


Illustration shows Ø 1000

Outer diameter Ø (mm)	DN in mm	H in mm	L in mm	B1 in mm	B2 in mm	Connection for pipe size Ø mm	Art. no.
Ø 110	-	-	120	-	-	-	79 100
Ø 125	-	-	136	-	-	-	79 125
Ø 160	-	-	142	-	-	-	79 150
Ø 200	-	-	170	-	-	-	79 200

Without connection coupling, connection according to EN 1451-1

Outer diameter Ø (mm)	DN in mm	H in mm	L in mm	B1 in mm	B2 in mm	Connection for pipe size Ø mm	Art. no.
Ø 250	250	400	220	345	280	-	79 250
Ø 315	315	450	225	400	410	-	79 300

With connection coupling*, for connection to all pipe materials

Outer diameter Ø (mm)	DN in mm	H in mm	L in mm	B1 in mm	B2 in mm	Connection for pipe size Ø mm	Art. no.
Ø 405	400	420	295	417	-	385 - 410	79 400
Ø 506	500	500	320	522	-	495 - 525	79 500
Ø 638	600	659	345	655	-	605 - 638	79 600
Ø 800**	-	-	-	-	-	-	79 800
Ø 1000**	-	-	-	-	-	-	79 1000

* With connection couplings it is possible to connect pipes of different diameters. Connection couplings are necessary where the difference in outer diameter is > 12 mm. Rights reserved for technical changes

** For wall installation