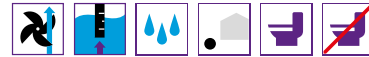


# Engineering systems base *Aquapump XL Mono / Duo*

Wet installation, for wastewater without or without sewage



EN 12050-1 ATEX version

**Tank volume:** 680 liters

**Pump volume:** max. 310 liters

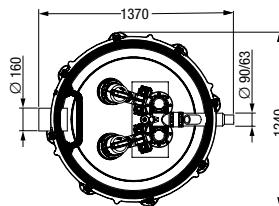
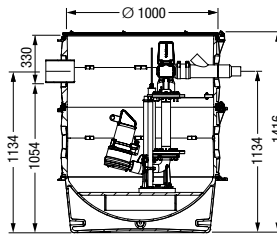
**Polyethylene system base** for underground installation, resistant to aggressive media. With  $\varnothing$  160 mm inlet. For connection to  $\varnothing$  1000 mm system chamber. Handles groundwater depths up to 3.000 mm.

With **single or twin removable wastewater pump(s)** with macerator for wastewater with or without sewage. With hydrostatic sensor for level measurement. Pressure pipe  $\varnothing$  63/90 mm outside diameter (welded PE pipe is to be used for the pressure pipe), including backflow preventer and closure valve on pressure pipe side. Power cable length: 10 m (30 m on request).

**Control unit**

With control unit with self-diagnosis system (SDS), battery buffering and logbook function, control unit is splashproof (IP 54).

- **Installation:** in combination with system chambers page 156 – 157
- **Accessories:** pages 167 – 170



**Mono version with one macerator pump**

STZ pump	Pumping volume in liters	Voltage	Art. no.
1300-S1	310	400 V	874 30 14
2500-S1	310	400 V	874 30 15
3700-S1	310	400 V	874 30 16

**Duo version with two macerator pumps**

STZ pump	Pumping volume in liters	Voltage	Art. no.
1300-S1	300	400 V	874 30 17
2500-S1	300	400 V	874 30 18
3700-S1	300	400 V	874 30 19

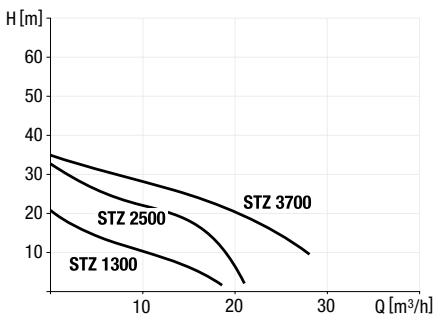
**Engineering systems base *Aquapump XL* in combination with system chamber  $\varnothing$  1000**

Access opening  $\varnothing$  600

Access opening  $\varnothing$  800



**Pumping capacity**



**Pump type**

Pump type	Voltage	Amperage	Input Power (P1)	Power (P2)	Pumping capacity	Pumping height
STZ 1300-S1	400 V	2.5 A	1.3 kW	0.9 kW	20 m³/h	21 m
STZ 2500-S1	400 V	4.4 A	2.5 kW	1.9 kW	21 m³/h	33 m
STZ 3700-S1	400 V	6.4 A	3.7 kW	3.1 kW	28 m³/h	35 m

\* Definition of S1-pumps see page 101



Always the right choice:      
[kessel.com/smartselect](http://kessel.com/smartselect)